



S1



S2



S3



S4



S5



S6



S7



S8



S9



S10



S11



S12



S13



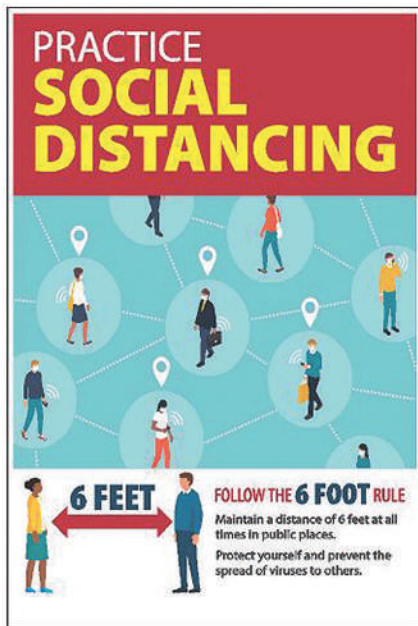
S14



S15



S16



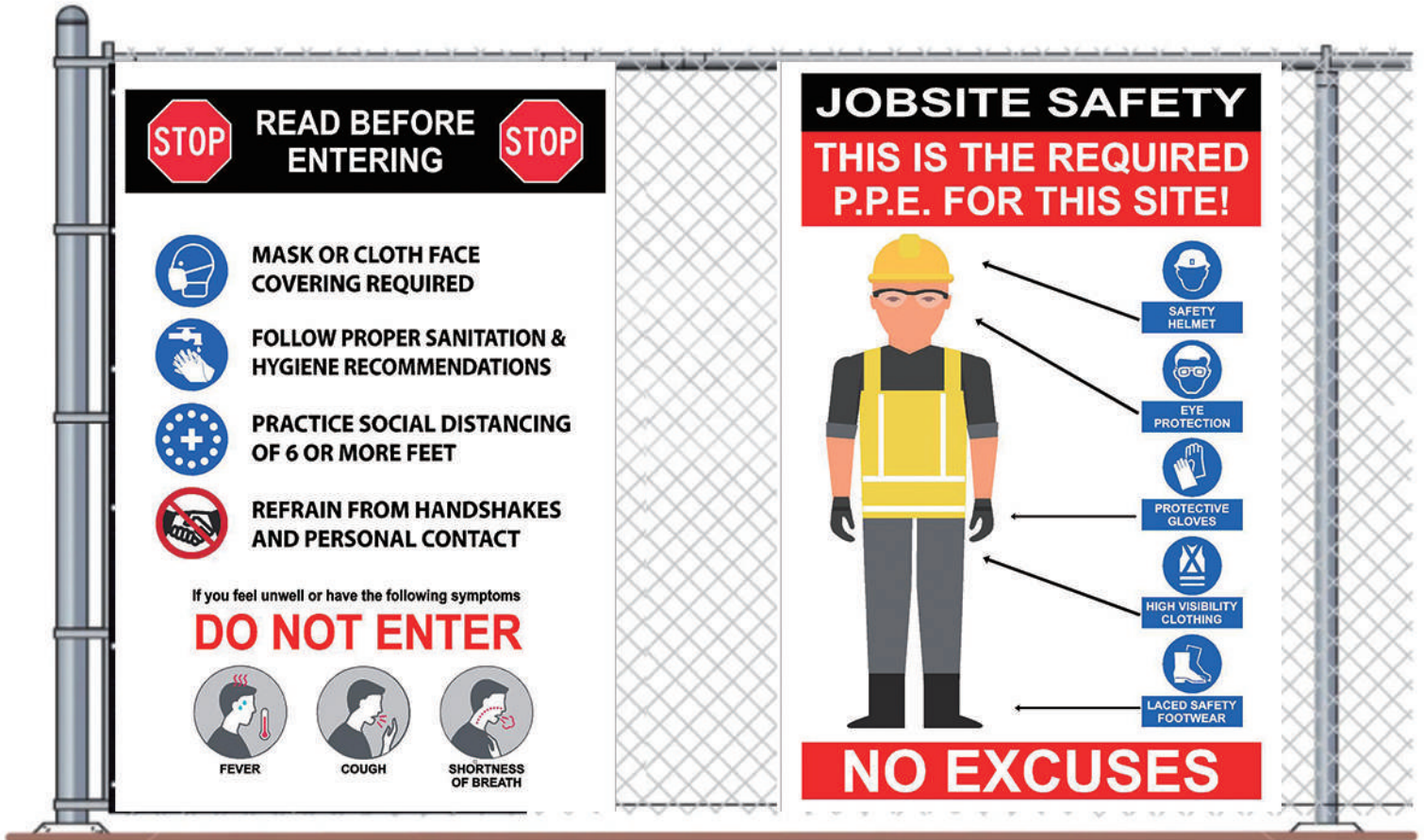
S17



S18



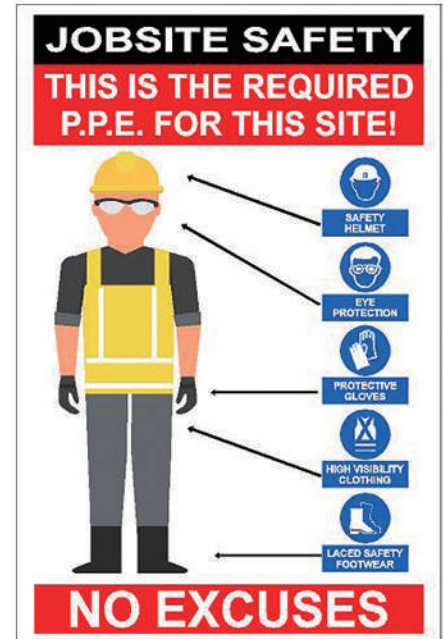
S19



S20



S21



S22

Guidelines for wearing a mask in public and at work.
A protective mask or face covering can lower the risk of infecting others and being infected.

- Wash hands before putting on mask.
- Secured with ties or ear loops.
- Mask should cover your mouth, nose and chin.
- Mask should fit snugly against sides of the face.
- Do not touch your face, the mask, or adjust mask while it is on.
- If you touch mask, wash hands right away.
- Remove by holding the ear loops or ties ONLY.
- Be careful not to touch eyes, nose, or mouth when removing.
- Discard in a closed receptacle.
- To wash and reuse, place in a sealed receptacle to transport. Launder in machine with HOT water (130°F) or soak for five minutes in a solution of two tablespoons of bleach per quart (liter) of water. Rinse well with fresh water and hang to air-dry.
- Wash hands immediately after removing and handling mask.

S23

STOP Feeling Sick?
Stay home when you are sick!

If you feel unwell or have the following symptoms
DO NOT ENTER THE BUILDING

FEVER COUGH SHORTNESS OF BREATH

If you are in the building please leave and contact your health care provider. Then follow up with your supervisor.

S24

PARE ¿Se siente enfermo?
¡Quédese en casa si está enfermo!

Si no se siente bien o tiene alguno de estos síntomas,
NO ENTRAR AL EDIFICIO

PIEBRE TOS DIFICULTAD PARA RESPIRAR

Si ya está en el edificio, salga y comuníquese con su proveedor de atención médica. Luego, póngase en contacto con su supervisor.

S25

NOTICE
EMPLOYEES ONLY
VENDORS AND VISITORS BY APPOINTMENT ONLY
FOR ALL OTHER BUSINESS PLEASE CALL

S32

NOTICE
ALL DRIVERS PLEASE REMAIN IN LOADING DOCK AREA
VENDORS AND VISITORS BY APPOINTMENT ONLY
FOR ALL OTHER BUSINESS PLEASE CALL

S33

TEMPERATURE CHECK STATION

ALL EMPLOYEES ARE REQUIRED TO CHECK THEIR TEMPERATURE

S26

SOCIAL DISTANCING
KEEP AT LEAST 6 FEET / 2 METERS OF DISTANCE FROM ONE ANOTHER

6FT MAINTAIN YOUR DISTANCE

WORK TOGETHER STAY SAFELY APART

S27

ATTENTION DELIVERY DRIVERS

TO HELP KEEP OUR EMPLOYEES SAFE DURING THE CORONAVIRUS (COVID-19) PANDEMIC

KEEP AT LEAST 6 FT OF DISTANCE FROM OUR EMPLOYEES

PLEASE DO NOT ENTER & ADVISE US IF YOU ARE EXPERIENCING ANY OF THE FOLLOWING SYMPTOMS:

- *FEVER
- *FLU-LIKE SYMPTOMS SUCH AS: COUGHING, SORE THROAT, AND FATIGUE
- *PERSISTENT PAIN OR PRESSURE IN THE CHEST
- *SHORTNESS OF BREATH OR
- *HAVE BEEN IN CONTACT WITH A PERSON WITH CONFIRMED CASE OF CORONAVIRUS

S28

CONSTRUCTION SAFETY

CHILDREN MUST NOT ENTER OR PLAY ON THIS SITE
All Building Site Regulations must be complied with and Safety Procedures must be observed

This Protective Equipment:

MUST BE WORN ON THIS SITE

ENTRANCE TO AUTHORIZED PERSONNEL ONLY

ALL DRIVERS & VISITORS MUST REPORT TO SITE OFFICE

S34

NOTICE

GLOVES, GOGGLES AND FACE MASKS REQUIRED WHEN DISINFECTING TOOLS, EQUIPMENT AND FREQUENTLY USED OBJECTS OR SURFACES

S29

NOTICE
EMPLOYEES ONLY
VENDORS AND VISITORS BY APPOINTMENT ONLY

AVISO
SOLO EMPLEADOS
VENDEDORES Y VISITANTES SOLO POR CITA

FOR ALL OTHER BUSINESS PLEASE CALL
PARA TODOS LOS DEMÁS NEGOCIOS POR FAVOR LLAME

S30

NOTICE
ALL DRIVERS PLEASE REMAIN IN LOADING DOCK AREA
VENDORS AND VISITORS BY APPOINTMENT ONLY

AVISO
TODOS LOS CONDUCTORES POR FAVOR PERMANECER EN ÁREA DE CARGA
VENDEDORES Y VISITANTES SOLO POR CITA

FOR ALL OTHER BUSINESS PLEASE CALL
PARA TODOS LOS DEMÁS NEGOCIOS POR FAVOR LLAME

S31

CAUTION

LIMIT THE NUMBER OF PERSONS ON THE SCAFFOLD TO HELP STOP THE SPREAD OF INFECTION

6 FT APART

S35

Hard Hats, Safety Shoes, Hi-Vis Vest & Gloves Must Be Worn at all Times

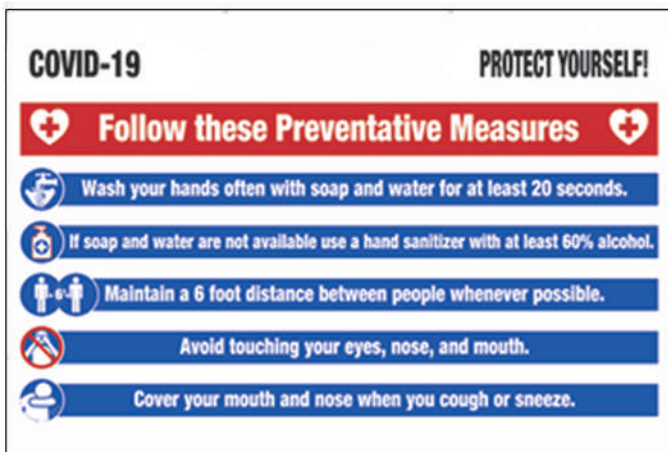
S36



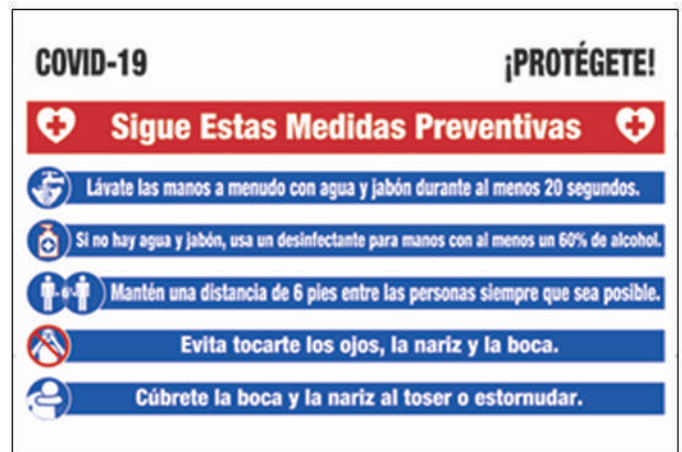
S37



S38



S39



S40

NYC NYC INDUSTRY BEST PRACTICES FOR Physical Distancing Guidelines for Construction Sites

The following guidelines are based on the latest COVID-19 guidance from the CDC, OSHA, and other public health agencies. Small business owners are responsible for enforcing physical distancing and safety measures on their job sites. These guidelines are shared to help you identify and manage appropriate measures for your job site.

ENSURE PHYSICAL DISTANCING ON-SITE

- Workers should maintain a distance of six feet from other workers on-site. Provide barriers to help workers maintain physical distancing when performing tasks together, such as when working on a structure.
- Present workers from engaging during pre-shift meetings, incident talks and other worker gatherings.
- Design activities for job locations that get workers close together, for example, workers that perform the same task can be grouped together to work. Different types of risk, or job tasks that require work start times and breaks, including breaks and backfills.

OPERATIONS AND PHYSICAL DISTANCING

- If you cannot maintain a 6-foot distance, workers should wear other protective equipment, such as face shields, goggles, and respirators. Workers should wear other protective equipment, such as face shields, goggles, and respirators.
- Design activities for job locations that get workers close together, for example, workers that perform the same task can be grouped together to work. Different types of risk, or job tasks that require work start times and breaks, including breaks and backfills.

SUGGESTED SAFETY MEASURES

- In addition to the above safety guidelines, there are a number of other strategies which workers should readily be able to implement including: keep workers and the public safe, these include:
 - Keep temperature logs in an outdoor thermometer in close proximity to workers before testing them on the job.
 - Keep workers safe by ensuring that workers are not working in close proximity to workers before testing them on the job.
 - Keep workers safe by ensuring that workers are not working in close proximity to workers before testing them on the job.

S41

S42

STOP THE SPREAD OF GERMS
Dejarlos en propagación de gérmenes.

Cover Your Cough
Cubre tu estornudo y tose.

Wash Your Hands
Lávate las manos.

STOP THE SPREAD OF CORONAVIRUS: MAINTAIN SIX FEET OF DISTANCE
Evita que el COVID-19 se propague.

Protect yourself from COVID-19 and stop the spread of germs.

STOP (No entry allowed)

FACE COVERING REQUIRED

WASH YOUR HANDS!

¡LÁVATE LAS MANOS!

FACE COVERING REQUIRED

S43

This is a #SafeJobsite

WEAR A MASK

S44

Your Company Name/Logo

PUBLIC HEALTH NOTICE
DUE TO THE CURRENT CORONAVIRUS PANDEMIC

Contractor's Name REQUEST THAT YOU

DO NOT INTERACT WITH ANY CONSTRUCTION PERSONNEL.

VISITOR ALERT!

STOP

DO NOT ENTER CONSTRUCTION SITE
DO NOT APPROACH ANY CONSTRUCTION WORKERS
SITE VISITS BY APPOINTMENT ONLY

HELP PREVENT THE SPREAD OF COVID-19
PLEASE WASH YOUR HANDS
NO ONE ALLOWED ACCESS TO SITE WITHOUT PROPER FACE MASK

S45

Your Company Name/Logo

SITE SAFETY

- NO TRESPASSING AUTHORIZED PERSONNEL ONLY
- NO SMOKING ANYWHERE ON SITE
- HARD HAT MUST BE WORN AT ALL TIMES ON SITE
- EYE PROTECTION MUST BE WORN AT ALL TIMES ON SITE
- PROPER WORK ATTIRE MUST BE WORN AT ALL TIMES ON SITE
- 100% TIE OFF AT ALL TIME WHEN EXPOSED TO A 6' OR GREATER FALL HAZARD
- PROTECTIVE VEST MUST BE WORN AT ALL TIMES ON SITE
- NO DRUGS OR ALCOHOL USE ON THIS SITE
- NO AUDIO DEVICES OF ANY KIND TO BE IN USE WHILE WORKING

S46



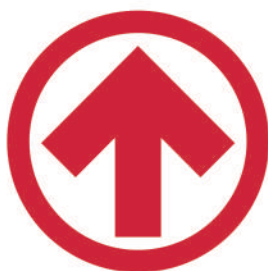
S47



S48



S49



S50



S53



S54



S51



S52



S55



S56



S57



S58



S59